

WE CREATE SOLUTIONS |

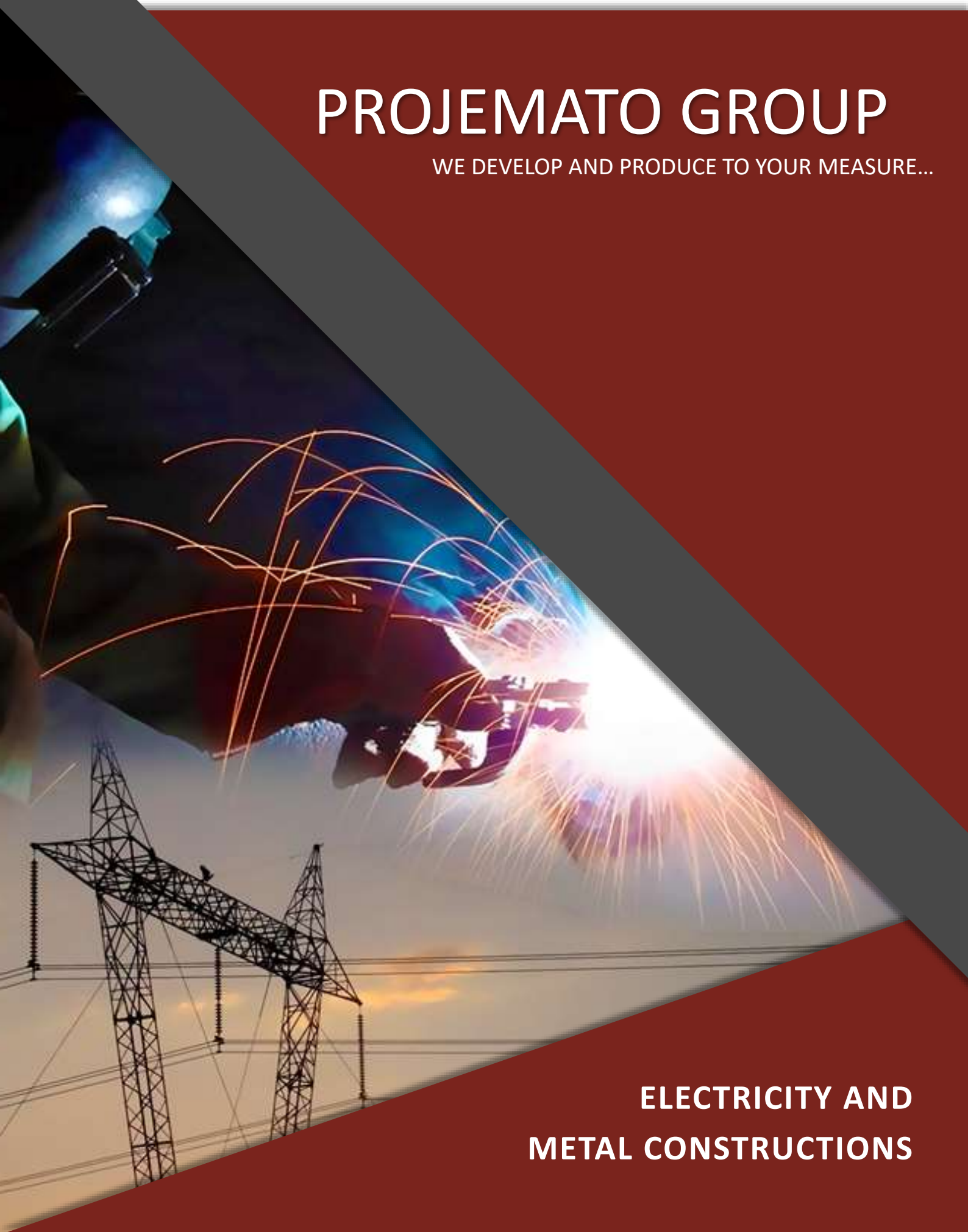
projemato



projemato
MADIRA

PROJEMATO GROUP

WE DEVELOP AND PRODUCE TO YOUR MEASURE...



**ELECTRICITY AND
METAL CONSTRUCTIONS**

INDEX

PROJEMATO GROUP	04
FACILITIES	06
OUR SERVICES	10
ELECTRICAL INSTALLATIONS	12
METAL CONSTRUCTIONS	14
MECHANICAL INSTALLATIONS	16
PIPING	18
SHIPBUILDING	19
TRANSPORT	20
TELECOMUNICATIONS	21
GEOGRAPHICAL INTERVENCION AREA	22
CONTACTS	23

OUR ORGANIZATION



PROJEMATO— PROJECTOS, MONTAGENS ELÉTRICAS E METALOMECÂNICAS, LDA

ADRESS

Rua António Costa Neiva, 785, 4480-016 Vilar de Pinheiro - Portugal

VAT NUMBER	SINCE
506591964	2003

METALVOLT— MONTAGENS INDUSTRIAIS, LDA

ADRESS

Rua António Costa Neiva, 785, 4480-016 Vilar de Pinheiro - Portugal

VAT NUMBER	SINCE
509043127	2008

PROJEMATO MADEIRA— PROJOTOS, MONTAGENS ELÉTRICAS E METALOMECÂNICAS, LDA (ZONA Franca da Madeira)

ADRESS

Avenida Arriga 30 1.º, 9000-016 Funchal - Portugal

VAT NUMBER	SINCE
513488278	2015

PROJEMATO GROUP

PRESENTATION

The **Projemato Group** is composed by the companies **Projemato / Metalvolt / Projemato Madeira** and has been strongly established in the market since 2003 and is active at national and international level.

The group develops its activities in the industrial sector, namely in metalworking, electricity, and telecommunications, more specifically in the assembly and maintenance of structured networks and telecommunications; electrical and mechanical installations, repairs and maintenance; manufacture and assembly of metal constructions and industrial pipes.



One of the group's objectives is customer satisfaction through improving the quality of services provided, which is why it has implemented a Quality Management System and is **certified by ISO 9001: 2015**.

Since 2013 Projemato is distinguished with the **PME Líder Company award**.



Vision

Being a reference group in the market that operates, both nationally and internationally, contributing and generating value to its partners, customers, employees and stakeholders.

Mission

Projemato, Metalvolt and Projemato Madeira's mission is to satisfy their customers, ensuring the quality of services provided, offering the best working conditions to their employees and always contributing to the development and innovation of their technological, technical and human resources.



Values

Our main values:

COMPETENCE

PROFISSIONALISM

AMBITION

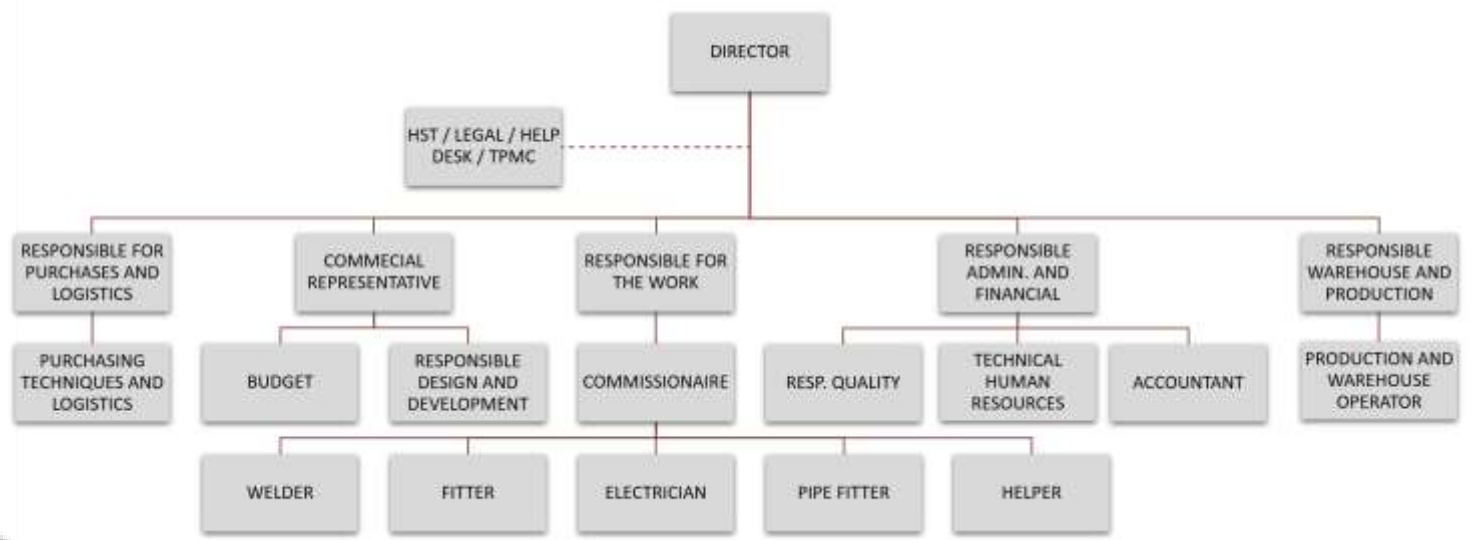
COMMITMENT

ORGANIZATION

History



How we are organized?





HUMAN RESOURCES DEPARTMENT

Experience and Professional Quality

Our employees have extensive experience of their profession.

In the most demanding professions, they comply with qualifications required by law or international standards.

We bet on the continuing training and personal and professional development of our employees.

A large team of specialized employees are our main capital. In our structure we have employees from the most diverse areas:

- + Managers
- + Accountants
- + Human Resources Technicians
- + Occupational Hygiene and Safety Technicians
- + Psychologists
- + Administratives
- + Engineers
- + Commercial
- + Designers
- + Supervisors
- + Team Leaders
- + Work Preparers
- + Quality Controllers
- + Fiber Optic Technicians
- + Industrial Electricians
- + Civil Electricians
- + Pipefitters
- + Welders TIG+ARC
- + Welders MIG/MAG
- + Fitters
- + Assemblers
- + Mechanicals
- + Helpers

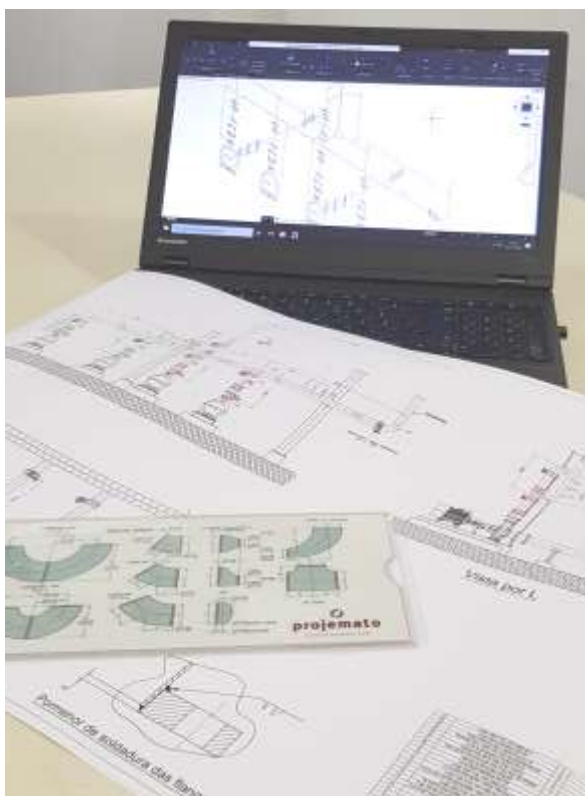
FACILITIES



Technical Department

Quality

All works we design, execute and assemble respect the good practices of the construction art and are based on the knowledge acquired by our staff, according to international construction and safety standards (EN, DIN, ASTM, BS, among others).



A team of engineers, budgetists and designers with extensive experience in project design and budgeting:

- Electrical Projects;
- Telecommunications Projects;
- Metal Structures;
- Mechanical Installations;
- Piping (all fluids);
- Horizontal and vertical tanks;
- Medium and high voltage measurement systems.

WORKSHOP

In our workshop we have develop the following works:

- Execution of all types of metal structures;
- Execution of works on plate;
- Execution of all kinds of works in welded and bolted construction;
- Welding to coated electrode (Process 111);
- Welding MIG/MAG (process 135/136);
- Welding TIG (process 141);
- CNC plasma sheet cut thickness up to 50mm in carbon steel and 30mm stainless steel;
- Profile cutting work up to 450mm;
- Lathe and Milling Work



Specialization

Our employees are highly specialized, all workers receive training and develop skills to improve.



Team Work

Our employees have extensive experience in teamwork, from large workgroups to small teams.

OUR SERVICES

- ELECTRICAL INSTALLATIONS;
- METAL CONSTRUCTIONS;
- MECHANICAL INSTALLATIONS;
- PIPING;
- SHIPBUILDING;
- TRANSPORT;
- TELECOMMUNICATIONS.



HUMAN RESOURCES

A large team of employees specialized in the various areas in which we operate, are our main capital.



PLANNING

We do the complete planning of the entire project, from materials to the teams, with aim of carrying out a perfect job and making the customer satisfied.



QUALITY

We respect the rules inherent in the work we are doing. We are certified for compliance with quality standards.



PRODUCTION

We always try to have the best employees, products, tools and materials to maintain a high standard of service and thus do a high quality job.



MONITORING

We monitor all of our projects, continuously check what is planned and propose suggestions for improvement.



AFTER SALES

We seek to satisfy our customers by guaranteeing work performed with quality, we do the maintenance of the work performed.

ELECTRICAL INSTALLATIONS



INDUSTRIAL ELECTRICAL INSTALLATIONS

We perform industrial electrical installation work around the world. Installation frames, creation of cable tray, cable routing and wiring boards and cables. We maintain the entire electrical sector of your industry.

BUDGETING

We visited your facilities to analyze the best solutions to carry out the project, and with our technical team we created the solution for you.

PLANNING

We do the complete planning of all work from materials to teams, with the goal of doing a perfect job that will make the customer happy.

QUALITY

We respect the inherent standards to the work that we are doing. We have highly specialized work teams to carry out the work.

We always strive to have the best products, tools and materials to maintain the high standard of service and thus do a high quality job.





ELECTRICAL INSTALLATIONS

PORTFOLIO

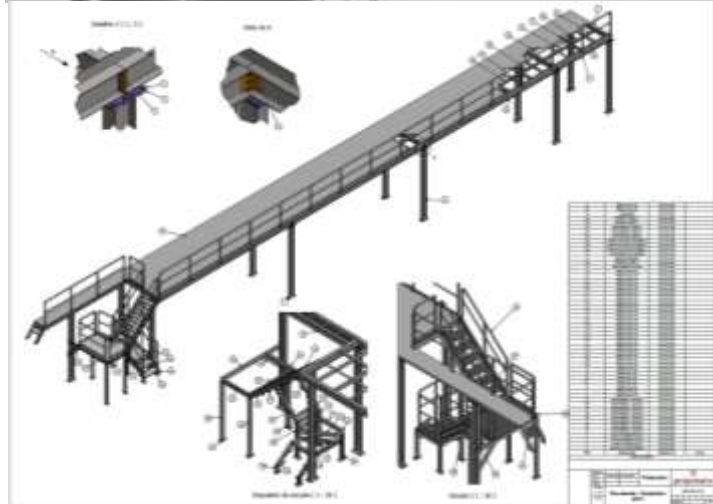
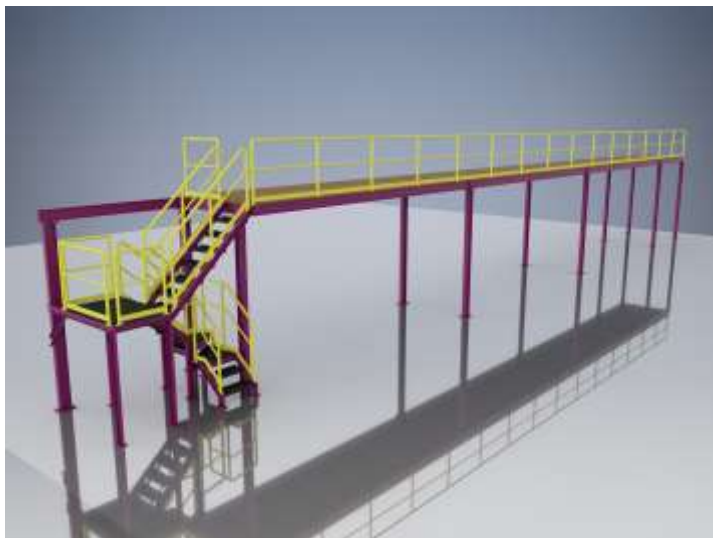
- Ericsson Telecomunicações, Lda (Portugal)
- Petrogal S.A. – Refinery (Leça da Palmeira – Portugal)
- S.N. Longos, S.A. (Paio Pires – Portugal)
- S.N. Maia - Siderurgy Nacional S.A – (Portugal)
- Lactogal, Produtos Alimentares S.A. – U. F. De Modivas – (Portugal)
- Halyvourgiki – Siderurgy (Elefsina, Atenas – Greece)
- Corus Engineering Steels (Rotherham – England)
- Arcelor Corrugados – Siderurgy (Azpeitia – Spain)
- ENI – Refinery (Sannazzaro di Burgundi – Italy)
- Voest Alpine Schienen, GmbH – Siderurgy (Leoben – Austria)
- Acciaieria Bertoli Safau – Siderurgy (Udine – Italy)
- Corus Construction & Industrial (Scunthorpe – England)
- AMAG – Branau am Inn (Austria)
- Ferriere Nord Spa (Verona – Italia)
- Cegelec (Madrid – Spain)
- Acciaierie Bertoli Safau (Udine – Italia)
- Uddeholm A.B. (Hagfors – Sweden)



METAL CONSTRUCTIONS

WE DESIGN, PERFORM AND ASSEMBLE

- Metal pavilions;
- High floors;
- Stadium Coverage;
- Structures for Steel works;
- Boiler transport structures;
- Metal silos;
- Industry expansions.



MAINTENANCE AND REPAIR

We maintain metal structures and mechanical equipment; repair of steel production lines; maintenance of tanks; engine alignment; UPS and battery bank service.



Cutting and welding work on carbon steel plate and stainless steel



MOUNTING EQUIPMENTS

We perform reactor movement work; Hydrocraker line assemblies; Assembly of air coolers; Assembly of primary and secondary pumping and assembly of production lines.

METAL CONSTRUCTIONS

PORTFOLIO

CONSTRUCTIONS

- Stadium Arena da Amazônia (Manaus – Brazil)
- King Abdullah Sports City – (Jeddah – Saudi Arabia)
- Arsenius (Sines – Portugal)
- Refinery Expansion (Sines – Portugal)
- Amorim Revestimentos 2, S.A. (S.Paio de Oleiros – Portugal)
- Cimpor, Cimentos de Portugal SGPS, S.A. (Sines – Portugal)
- Asturfeito, SL (Ponferrada – Spain)
- Caldefusa, Caldereria de Fuenlabrada, S.A. (Madrid - Spain)
- Cepsa La Rábida – Refinery (Huelva – Spain)
- Total – Refinery (Gonfreville L’Orcher – France)



ASSEMBLY

- Emmsa S.A. (Barcelona – Spain)
- Cepsa La Rábida – Refinery (Huelva – Spain)
- Imtech Mavisa S.A. (Cádiz – Spain)
- Desmet Ballestra España S.A. (Madrid - Spain)
- Abantia Ticsa (Madrid – Spain)
- Grupo Boluda, Union Naval Valencia S.A. (Valência – Spain)
- Petrogal SA – Refinery (Leça da Palmeira – Portugal)



MAINTENANCE AND REPAIR

- Silos de Leixões (Matosinhos – Portugal)
- S.N. Maia – Siderurgia Nacional S.A (Maia – Portugal)
- Amorim Revestimentos, S.A. (S.Paio de Oleiros – Portugal)
- Cimpor, Cimentos de Portugal SGPS, S.A. (Souselas – Portugal)
- Petrogal/Galp Services S.A. – Refinery (Leça da Palmeira – Portugal)
- Corticeira Amorim S.A. (Mozelos – Portugal)
- Celsa – Siderurgy (Barcelona – Spain)
- Sidmar – Siderurgy (Belgium)
- Emmsa S.A. (Barcelona – Spain)



MECHANICAL INSTALLATIONS



WE DO:

- Engine Assembly;
- Engine Alignments;
- Engine revamping, ducts and fans;
- Assembly of hydraulic systems;
- HVAC network mounts;
- Production line assembly.



PORTFOLIO

- S.N.Longos (Paio Pires – Portugal)
- Voest Alpine Schienen GmbH – Siderurgy (Leoben – Austria)
- Ispadue, SpA – Siderurgy (Sesto al Reghena – Italy)
- Swedish Steel (S.S.A.B.) – Siderurgy (Borlange – Sweden)
- Arcelor Siderurgy (Dunkerque – France)
- Cockerill Sambre, S.A. (Liège – Belgium)
- Celsa – Siderurgy (Barcelona – Spain)
- Vallourec – Siderurgy (France)
- Sidmar – Siderurgy (Belgium)
- Siderurgy Balboa, SA (Spain)
- Sidenor – Factory de Basauri (Biscaia –Spain)



PIPING



INDUSTRIAL PIPING

Projemato Group develops industrial piping projects, conducts its production and performs assembly.

We specialize in making stainless steel pipe and carbon steel pipe designs. We carry out projects:

- Hydraulic networks;
- Fire fighting networks;
- Steam networks;
- Compressed air networks.



PORTFOLIO

- Petrogal/Galp Services S.A. – Refinery (Leça da Palmeira – Portugal)
- Sonae Indústria, S.A. (Maia – Portugal)
- Lactogal, Produtos Alimentares S.A. (U. F. da Tocha – Portugal)
- Ospedal G. Salvini (Milão – Italy)
- Flender Werft (Lubeck – German)
- Chang Won Speciality Steel Co, Ltd – Siderurgy (South Korea)
- Villares Metals S.A. (S. Paulo – Brazil)
- Total – Piping Assembly of 2.200t. (Gonfreville L’Orcher– France)
- Emmsa SA (Barcelona – Spain)
- Imtech Mavisa SA (Cádiz – Spain)
- De Smet España (Madrid – Spain)
- Abantia Ticsa (Madrid – Spain)
- Sidenor (Bausauri - Spain)
- SIME (Ashdod – Israel)



SHIP PRODUCTION

The Projemato Group has market experience in the production of ships, whether welding, metal construction, engine assembly, piping, electricity and telecommunications.

We manufacture, expand and maintain:

- Cargo Ships;
- Ship Tugboats;
- Cruise ships;
- Barges.

PORTEFÓLIO

- Lloyd Wreft – Doca Secas (Bremerhaven – Germany)
- Aker MTW Werft – Doca Secas (Wismar – Germany)
- Flender Werft – Doca Secas (Lübeck – Germany)
- Fincantieri Cantieri Navali S.p.A. – Doca Secas (Riva Trigoso – Italy)
- Demont SpA (Bremerhaven – Germany)
- Demont SpA (Marghera – Italy)
- Grupo Boluda, Union Naval Valencia SA (Valencia – Spain)
- Westsea (Viana do Castelo – Portugal)
- Turbo Technik (Barcelona – Spain).



TRANSPORT



METRO AND AIR TRANSPORT

The Projemato Group develops projects for the manufacture and installation of components for light rail transport and air transport.



Metro

We perform line assembly work and its electrification. At the stations we do all the electrification, we assemble all the circuits of communications networks, we install security mechanisms at the metro stations.



AIR TRANSPORT

We manufacture and assemble baggage carriers for airports, either for baggage check-in or luggage control.

PORTEFÓLIO

- Metro (Copenhagen - Denmark)
- Surface Metro (Ahrus - Denmark)
- Baggage conveyor (Airport Humberto Delgado - Lisboa - Portugal)
- Baggage conveyor (Airport Charles de Gaulle - Paris - France)
- Baggage conveyor (Airport Lille - Lesquin - France)
- Baggage conveyor (Airport Toulouse - Blagnac - Toulouse -France)
- Baggage conveyor (Airport Nantes Atlantique - France)
- Baggage conveyor (Airport Orly - France)



TELECOMMUNICATIONS

The Projemato Group installs communication networks (data networks, telephone networks and internal video surveillance circuits). We have extensive experience in this area, with the installation of many networks in the projects we carry out.



Fiber Optic Connections

We have a team of employees trained in the installation and fusion of all types of fiber optics.

We also have our own melting equipment anywhere in the world. We also do with our equipment, verification, evaluation and repair of fiber networks.



Network Connections

We make data cable connections and telephone lines. We install backstage and do all your connectivity.

We design and build complete data processing centers.

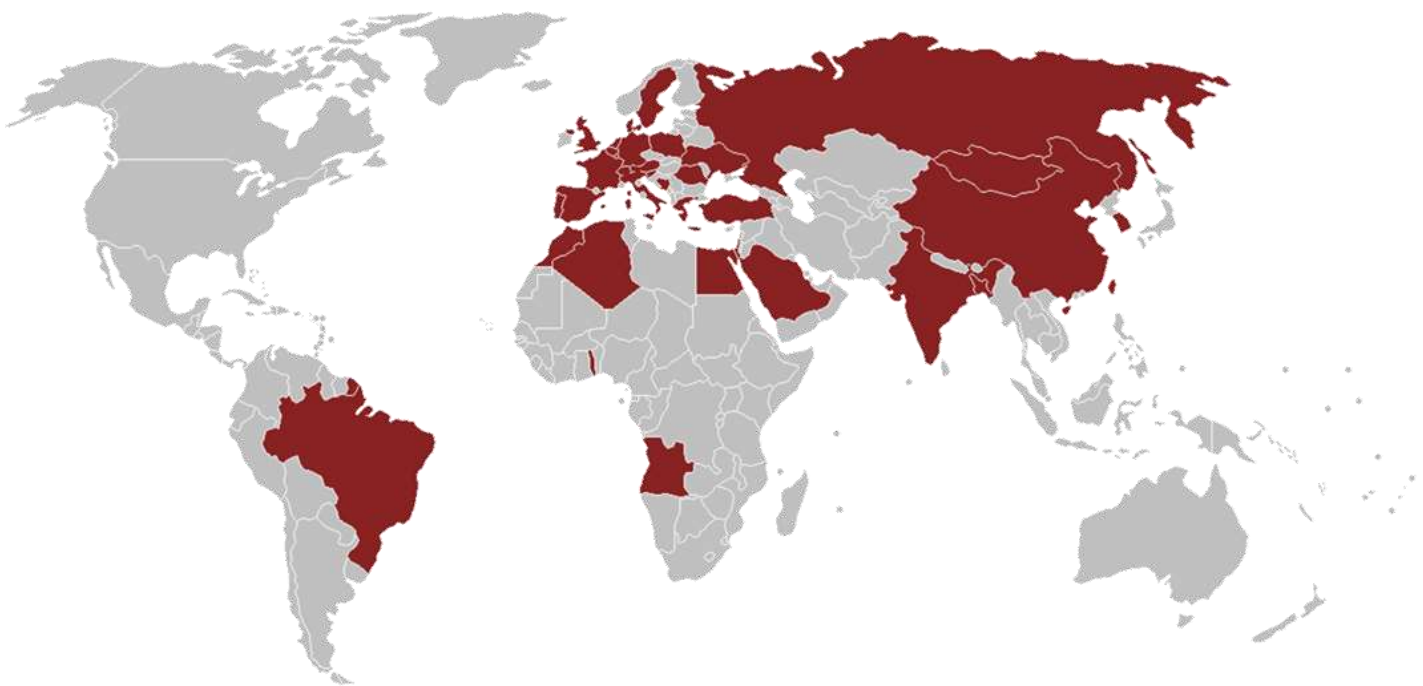
COMMUNICATION NETWORKS

PORTEFÓLIO

- Metro Station (Copenhagen-Denmark)
- Surface Metro Station(Ahrus-Denmark)
- Ericksson Portugal (Portugal)
- SN Megasa Seixal (Seixal—Portugal)
- Arcellor Mittal (Differdange - Luxembourg)
- Uddeholm AB (Hagfors - Sweden)
- Sidenor (Basauri—Spain)



GEOGRAPHICAL INTERVENCION AREA





ADDRESS: Rua António Costa Neiva, 785
4485-016 Vilar do Pinheiro
Vila do Conde— Portugal

Latitude: 41o16'10.47" N
Longitude: 8o40'49.62" O



TELEPHONE: (+351) 22 927 96 20 | (+351) 22 927 28 21



FAX: (+351) 22 927 96 29



MOBILE PHONE: (+351) 96 808 63 80



E-MAIL: info@projemato.com



WEBSITE: www.projemato.com | www.metalvolt.com



ABOUT US

The Projemato Group is headquartered in Portugal is a group of qualified companies in the areas of electrical installations, metallic constructions, maintenance and repairs, mechanical installations, industrial pipes, naval constructions, transport and telecommunications. Projemato is based in Portugal but operates in national and international territory.

